

# 4-DAY ONLINE AUCTION



GIORIA R/162-4000 CNC CYLINDRICAL GRINDER



TACCHI FT 450 500X2500 CNC SKIVING ROLLER BURNISHING MACHINE

Assets Available Due to the Facility Closure of

**CATERPILLAR**  
JOLIET, ILLINOIS

OVER 1.3 MILLION SQ. FT. PLANT CLOSURE FEATURING APPROX. (3,000) LOTS INCLUDING: MACHINING CENTERS, GRINDERS, METAL FABRICATING, CMM'S, TOOL ROOM, ROBOTS, (600) BALL BEARING TOOL CABINETS, (200) CRANES, LARGE SELECTION OF INSPECTION, OVER (1,000) CAT 50 TOOL HOLDERS, WELDING, DUST COLLECTORS/ DOWNFLO TABLES, WASHERS & MUCH MORE!



BALL BEARING TOOL CABINETS

**Sale Closing From:** Tuesday–Thursday, April 16–18, and Tuesday, April 23, From 10:00 AM CT Each Day  
**Inspection:** Monday, April 15, 8:00 AM to 4:00 PM CT or by Special Appointment  
**Location:** 2200 Channahon Road, Rockdale, Illinois 60436



Perfection Industrial Sales  
ph +1-847-545-6374  
fax +1-847-427-8884  
[www.perfectionindustrial.com](http://www.perfectionindustrial.com)

Online Bidding at  
[www.perfectionindustrial.com](http://www.perfectionindustrial.com)

Perfection Industrial Sales, IL Auction Licenses #444.000438 & #441.001779



# CNC BORE SKIVING-ROLLER BURNISHING MACHINES, CNC CYLINDRICAL GRINDERS, CNC VERTICAL GRINDER, ROTARY SURFACE GRINDERS, CENTERLESS GRINDERS, SURFACE GRINDERS



TACCHI FT 450 500X2500 CNC SKIVING ROLLER BURNISHING MACHINE

## CNC BORE SKIVING-ROLLER BURNISHING MACHINES

**2006 TACCHI FT SERIES 450 500X2500 CNC SKIVING ROLLER BURNISHING MACHINE**, Siemens Sinumerik 840D Control, 500mm Center Height, 1,000mm Swing Over Bed, 200–2,500mm Boring Depth Capacity, 100–375mm Counter Boring Capacity, 5–800 RPM Standard Speed Workpiece Rotation, 3-Speeds, 75kW Main Headstock Motor

## CNC CYLINDRICAL GRINDERS

**(4) GIORIA R/162-4000 CNC CYLINDRICAL GRINDERS**, (As New As 2008), Siemens 840D CNC Control, 35.4" Max. Swing Over Bed, 32.28" Max. Grinding Wheel Diameter, 157.48" Max. Grinding Length, 36" Max. Grinding Wheel Diameter, 6,600 Lb Max. Work Weight on Steady Rest, 20.07" Wheelhead Cross Slide Travel, 169.29" Wheelhead Longitudinal Travel, ±7 Degrees Wheelhead Swivel, Marposs 7 Gauging, Coolant, Enclosure

## CNC VERTICAL GRINDER

**MODLER MF1950 CNC VERTICAL TWIN DISC GRINDER**, s/n 801, Siemens Sinumerik 840D CNC Control, Donaldson Torit Dust Collector, Resy Filtration System



KOYO KC-400A CNC INFEEED GRINDER



**2 AVAILABLE**

ACME C-2 CENTERLESS GRINDER



BLANCHARD 22ACD42 ROTARY SURFACE GRINDER



HILL ACME SURFACE GRINDER

## ROTARY SURFACE GRINDERS

**BLANCHARD NO. 18 ROTARY SURFACE GRINDER**, s/n 11383, 42" Diameter Chuck, 48" Swing, 20" Segmented Chuck, 750 Max. RPM  
**BLANCHARD 22ACD42 ROTARY SURFACE GRINDER**, s/n 16074, Allen Bradley Panelview 1000 Control, Marposs P5, Torit Dryflow Collection System, Thermalcare Accu-Chill Chiller, Filter System

## CENTERLESS GRINDERS

**KOYO KC-400A CNC INFEEED GRINDER**, s/n 9707-0738, w/Fanuc 0-M Control, Flow-Con Industries Filter System  
**(2) ACME C-2 CENTERLESS GRINDERS**, s/n 25147 and 30040  
**ACME C-1 CENTERLESS GRINDER**, s/n 22753



MATTISON 1422-25 SURFACE GRINDER

## SURFACE GRINDERS

**HILL ACME SURFACE GRINDER**, 35.5" x 142" Magnetic Chuck, Approx. 36" Max. Grinding Wheel  
**MATTISON 1422-25 SURFACE GRINDER**, 14" x 48" Magnetic Chuck, 20" Diameter Grinding Wheel, Filter System

**BOYER SHULTZ SURFACE GRINDER**, 15 HP, Rexroth Hydraulic Unit, 39" x 13" Magnetic Chuck

**GRAND RAPIDS 380 SURFACE GRINDER**, s/n 380217, 15" x 10" Magnetic Chuck, 6.5" 3-Jaw Chuck



MODLER MF1950 CNC VERTICAL TWIN DISC GRINDER



BLANCHARD NO. 18 ROTARY SURFACE GRINDER

**ALSO AVAILABLE: HUNDREDS OF LOTS OF TOOLING, WELDING, INSPECTION, METROLOGY, RIGGING, POWER & HAND TOOLS & SHOP SUPPORT ASSETS. SEE END OF BROCHURE FOR MORE!**

To discuss your requirements for an auction, please call Perfection Industrial +1-847-545-6374



# CNC HORIZONTAL MACHINING CENTERS, CNC VERTICAL MACHINING CENTERS, DUAL TURRET CNC LATHES



**6 AVAILABLE**

MAZAK FH-880 HORIZONTAL MACHINING CENTERS



**2007-2000**

**20 AVAILABLE**

MAZAK FH-6800 HORIZONTAL MACHINING CENTERS

## CNC HORIZONTAL MACHINING CENTERS

**(6) MAZAK FH-880 HORIZONTAL MACHINING CENTERS**, Mazatrol M Plus CNC Controls, 31.5" x 31.5" Pallets w/6-Station Auto Pallet Changer, 1 Degree Pallet Index, 51.5" X, 43.3" Y, 39.3" Z, CAT 50 Spindle Taper, 7,000 RPM, 40 HP, 120 ATC, Chip Conveyor, High Pressure Coolant

**(9) 2002-2001 MAZAK FH-7800 HORIZONTAL MACHINING CENTERS**, Mazatrol 640M PC Fusion CNC Control, 31.5" x 24.75" Pallets w/5-Station Auto Pallet Changer, 41.3" X, 31.5" Y, 34.6" Z, CAT 50 Taper, 330 Tool ATC Mazak Tool Hive, Torit Mist Collection System

**(20) 2007-2000 MAZAK FH-6800 CNC HORIZONTAL MACHINING CENTERS**, Mazatrol 640M CNC Control, 5-Station Auto Pallet Changer, 41.3" X, 31.5" Y, 34.6" Z, CAT 50 Taper, Up to 506-Tool ATC Mazak Tool Hives, Filter System, Mist Collection System

**(2) 2004 AND 2003 MAZAK  $\mu$ 7800 CNC HORIZONTAL MACHINING CENTERS**, s/n 167966 and 167949, Mazatrol 640M PC Fusion CNC Control, (6) 31.5" x 24.75" Pallets w/Auto Pallet Changer, CAT 50 Taper, 240 ATC Mazak Tool Hive, Torit Mist Collection, High Pressure Coolant

**(2) K & T GIDDINGS & LEWIS ORION 2300 CNC HORIZONTAL MACHINING CENTERS**, Siemens 840D CNC Control, 60" X, 61" Y, 45" Z, 4,000 RPM, CAT 50 Spindle Taper, 0-150 IPM Speed Rates, 110 ATC, Through Spindle Coolant, Full Enclosure, (2007 Retrofit)



**20 AVAILABLE**

**2007-2000**

MAZAK FH-6800 CNC HORIZONTAL MACHINING CENTER



**2007 RETROFIT**

**2 AVAILABLE**

K&T/GIDDINGS & LEWIS ORION 2300 HORIZONTAL MACHINING CENTERS



**2004-2003**

**2 AVAILABLE**

MAZAK  $\mu$ 7800 HORIZONTAL MACHINING CENTERS



MAZAK VQC30/50B VERTICAL MACHINING CENTER

## CNC VERTICAL MACHINING CENTERS

**MAZAK VQC30/50B CNC VERTICAL MACHINING CENTER**, s/n 65436, 4,400 Lb Table Capacity, CAT 50 Taper, 59" X, 32" Y, 20" Z, 30-3,150 RPM Spindle, 24 ATC, 29.5" x 68-3/4" Table, Tsudakoma 4th Axis, Mazatrol CAM M-2 CNC Control

**MAZAK POWER CENTER SV-20 CNC VERTICAL MACHINING CENTER**, s/n 73561, 23.5" x 48" Table, 40 ATC, CAT 50, Mazatrol CAM M-2 CNC Control

## DUAL TURRET CNC LATHES

**MTR RAVENSBURG CENTER DRIVE DUAL TURRET CNC LATHE**, Siemens 840D CNC Control, 80" Swing Over Bed, 58" W, 144" Z, 50" U, 50" X, (2) 5-Position Turrets, 63" x 32" Pallet Size, 2-225 RPM Spindle Speed, Auto Pallet Changer, 150 HP Main Drive Motor, (2005 Retrofit)

**WELDON DUAL TURRET CENTER DRIVE CNC LATHE**, Siemens 840D CNC Control, 45.7" X1, 45.7" X2, 100" Z1, 65.3" Z2, 27" x 24" Hole in Headstock, (2) Pallets, Auto Pallet Changer, (2) 5-Position Turrets, 60 HP Main Drive Motor, (2005 Rebuilt)



**2005 RETROFIT**

MTR RAVENSBURG CENTER DRIVE DUAL TURRET CNC LATHE



**REBUILT 2005**

WELDON CENTER DRIVE DUAL TURRET CNC LATHE



# CNC LATHES, CNC ROBOTS, HORIZONTAL JIG & BORING MILLS, JIG BORERS, SLOTTERS, PRESSES, FORGING PRESS, PRESS BRAKE, SHEAR



**2 AVAILABLE**

DAIHATSU PNC-L56-10 CNC LATHE



**2 AVAILABLE**

FANUC R-2000IA 165F CNC ROBOT

SIP HYDR-6A JIG BORER



PRATT & WHITNEY 3E JIG BORER



DEVLIEG 3H-48 SPIRAMATIC JIG MILL



ROCKFORD SA VERTICAL SLOTTER



LUCAS 5" FLOOR-TYPE BORING MILL



WILLIAMS & WHITE 200-TON STRAIGHTENING PRESS



NIAGARA HBM-175-10-12 HYDRAULIC PRESS BRAKE

## FORGING PRESS

150-TON HANNIFIN FORGING PRESS, s/n C-43200

## PRESS BRAKE

NIAGARA HBM-175-10-12 HYDRAULIC PRESS BRAKE, s/n 52624, 175-Ton, 10" Stroke



LVD 10-OH-62 SHEAR

## SHEAR

LVD 10-OH-62 SHEAR, s/n 8710

## CNC LATHES

(2) DAIHATSU PNC-L56-10 CNC LATHES, s/n MD-0054 and MD-0049, 17" Max. Turning Diameter, 15-1/4" Max. Diameter Over Saddle, 31-1/2" Between Centers, 10" Kitagawa 3-Jaw Chuck, 12-Position Turret, Tail Stock

## CNC ROBOTS

(2) FANUC R-2000IA 165F CNC ROBOTS W/FANUC R-J3IB CONTROLS, s/n E05207330 and E05207329

## HORIZONTAL JIG & BORING MILLS

DEVLIEG 3H-48 SPIRAMATIC JIG MILL, s/n 8899, 35" x 48" Table, 3" Diameter Spindle Bar, No. 40 NMTB Taper, 16" Spindle Bar Travel, 48" Horizontal Travel, 36" Vertical Travel, 25-1,600 Spindle RPM

LUCAS 30T115 5" HORIZONTAL FLOOR TYPE BORING MILL, s/n 30T0906, 60" x 134" Table

## JIG BORERS

SIP HYDR-6A JIG BORER, s/n 7708, 43" x 33" T-Slotted Table, 40" Table Travel, 37.5" Max. Under Rail, 39.25" Distance Between Table and Spindle Nose, 2,200 Lb Table Capacity, 2-Axis DRO

PRATT & WHITNEY 3E JIG BORER, s/n 28769, 30" T-Slotted Table, 40-1,834 Spindle RPM, 16-Speed, Sony 2-Axis DRO

## SLOTTERS

ROCKFORD SA 20 VERTICAL SLOTTER, s/n 116 SA46, 28" Diameter Table, 10 HP, 3"-22" Stroke, 25-100 FPM Cutting Speed, 26" X, 26" Y, 55" Capacity, 40" Max. Table to Lower Face Tool Head

## PRESSES

200-TON WILLIAMS & WHITE STRAIGHTENING PRESS, s/n C-3728

25-TON HANNIFIN 250-A C-FRAME HYDRAULIC PRESS, s/n C-67704, 30" x 24" Table

5-TON HANNIFIN OG-F5B C-FRAME HYDRAULIC PRESS, s/n A-44309

APEX DENISON WR045 C-FRAME PRESS, s/n 25388



HANNIFIN 150-TON FORGING PRESS



HANNIFIN 250-A 25-TON C-FRAME HYDRAULIC PRESS

**ALSO AVAILABLE:** HUNDREDS OF LOTS OF TOOLING, WELDING, INSPECTION, METROLOGY, RIGGING, POWER & HAND TOOLS & SHOP SUPPORT ASSETS. SEE END OF BROCHURE FOR MORE!

View our current auction schedule at [www.perfectionindustrial.com](http://www.perfectionindustrial.com)



# WELDING & TORCH, TOOL ROOM MACHINERY, PLANT STORAGE & INVENTORY SYSTEMS



ARONSON  
HD30A  
POSITIONER

WELDING WIRE



ASSORTED WELDERS



SINGLE HEAD CNC GANTRY TORCH SYSTEM

## WELDING & TORCH

**SINGLE HEAD CNC GANTRY TORCH SYSTEM**, Burny 3 CNC Control, 16' Gantry Length, 10' x 80" Table

**ARONSON HD30A WELDING POSITIONER**, s/n 81151

**L-TEC PLASMARCM PCM-150 PLASMA**, s/n A890-00415

**LINCOLN, MILLER AND ESAB POWER SOURCES**

**20 KVA ACME 1-30-20 SPOT WELDER**, s/n 6162

**TORIT TRUNKLINE PORTA-TRUNK DUST COLLECTOR**, s/n IG707125

## TOOL ROOM MACHINERY

**SCOTCHMAN 7012-24 IRONWORKER**, s/n 7207-5-81

**WYSONG B-36 BENDING ROLL**, s/n PR15-171, 10 Ga x 36" Capacity

**MARVEL 15A4 HORIZONTAL BANDSAW**, s/n E-151109

**KYSOR JOHNSON KJ10 HORIZONTAL BANDSAW**, s/n H84012600

**DOALL 2612-2H VERTICAL BANDSAW**, s/n 206-35171, 24" x 30-1/2" Table, 26" Throat

**DOALL 3613E-20 VERTICAL BANDSAW**, s/n 399-82445

**ACCUBORE ACCU-CUT 4SM-S BORE SIZING SYSTEM**, s/n BSM-0373, Allen Bradley Panelview 600 PLC Control

**BIG BLU HAMMER BLU MAX 155 POWER HAMMER**, 9" Adjustable Stroke, 0-225 SPM, 18" Throat

**CHICAGO DREIS & KRUMP BPO-414-8 BOX PAN BREAK**, s/n 308704

**THOR 1210 TURRET PUNCH PRESS**, 14 Ga Capacity

**DI-ACRO POWER BENDER**, s/n DE-1114



SCOTCHMAN 7012-24 IRONWORKER



MARVEL 15A4 HORIZONTAL BANDSAW

**ALSO AVAILABLE: HUNDREDS OF LOTS OF TOOLING, WELDING, INSPECTION, METROLOGY, RIGGING, POWER & HAND TOOLS & SHOP SUPPORT ASSETS. SEE END OF BROCHURE FOR MORE!**



BIG BLU HAMMER  
BLU MAX 155  
POWER HAMMER

## PLANT STORAGE & INVENTORY SYSTEMS

(3) 2005 HANEL LEAN-LIFT STORAGE SYSTEMS

(7) HANEL ROTOMAT STORAGE SYSTEMS

(4) KARDEX INDUSTRIEVER 8000 STORAGE SYSTEMS

(2) KARDEX TITAN III STORAGE SYSTEMS

(4) KARDEX TITAN STORAGE SYSTEMS

(600+) VIDMAR & LISTA BALL BEARING TOOL CABINETS



HANEL LEAN-LIFT STORAGE SYSTEMS



KARDEX  
INDUSTRIEVER  
8000 STORAGE  
SYSTEMS

**4 AVAILABLE**



KARDEX  
TITAN III  
STORAGE  
SYSTEM

**2 AVAILABLE**



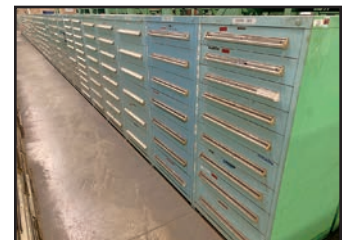
DOALL 3613E-20  
VERTICAL BANDSAW



DI-ACRO POWER BENDER



(600+) VIDMAR AND LISTA TOOL CABINETS





# PAINT LINE, HEAT TREATING FURNACE, CRANES & LIFTING, INSPECTION, METROLOGY LAB



**2011**



GEORGE KOCH 5-STAGE OVERHEAD CONVEYOR PAINT LINE



**2 AVAILABLE**

EF ROLLER HEARTH HEAT TREAT FURNACE

## PAINT LINE

2011 GEORGE KOCH 5-STAGE OVERHEAD CONVEYOR STYLE PAINT LINE, 80" x 55" Envelope, Stage 1-Wash, Stage 2-Rinse, Stage 3-Phosphate, Stage 4-Rinse, Stage 5-Sealer, Allen Bradley 1500P PLC, Overhead Conveyor System, Cure Oven

## HEAT TREATING FURNACE

(2) EF ROLLER HEARTH HEAT TREATING FURNACE, 80" x 36" Envelope, 732" Furnace Length, Natural Gas, 1,800 Degree F Max. Operating Temp, 3-Heating Zones, 72" L Entry Conveyor, Recuperators on 2-Zones, Exit Conveyor  
 (3) EF TEMPERING FURNACES, 102" x 24" Envelope, Natural Gas, 2-Zone



PROSERVE 40-TON BRIDGE CRANE

## CRANES & LIFTING

OVER (200+) CRANE SYSTEMS INCLUDING BRIDGE, Double Girder Bridge, Underslung, Multi-Bridge, Wall Mount Jibs, Free-Standing Jibs Up to 40-Ton.

OVER (50) DALMEC AND GCI MANIPULATOR ARMS

OVER (100) HYDRAULIC LIFT TABLES

## INSPECTION

1999 BROWN & SHARPE SIRIO M00-901-322-000 HORIZONTAL CMM, s/n 263

MAHR ST500 ROUGHNESS AND CONTOUR MEASURING STATION, s/n 270, w/MarSurf GD25, MarSurf PCV

## METROLOGY LAB

TINIUS OLSEN 400,000 LB SUPER L 4-POST TINSEL TESTER, w/290 Display, AD Recorder

MONSANTO TENSOMETER 2000, s/n 80SID1149  
 WILSON ROCKWELL 5JRBB HARDNESS TESTER, s/n 1277

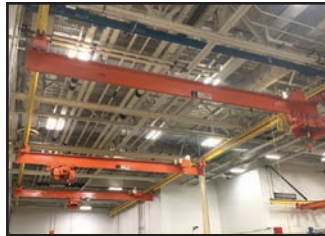
BUEHLER ISOMET 1000 PRECISION SAW  
 NICOLET NEXUS 470 FT-IR SPECTROMETER  
 MICROMERITICS ELZONE II PARTICLE SIZE ANALYZER, s/n 341



ABELL-HOWE FREE STANDING JIB CRANE



LODERRAIL FREE STANDING BRIDGE CRANE SYSTEM



TRI-BRIDGE OVERHEAD BRIDGE CRANE SYSTEM



**(50+) AVAILABLE**

DALMEC AND GCI MANIPULATORS

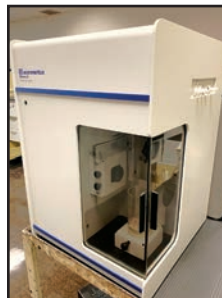


**(100+) AVAILABLE**

HYDRAULIC LIFTING TABLES



MONSANTO TENSOMETER 2000



MICROMERITICS ELZONE II PARTICLE SIZE ANALYZER



**400,000 LB**

TINIUS OLSEN SUPER L 4-POST TENSILE TESTER



NICOLET NEXUS 470 FT-IR SPECTROMETER

**ALSO AVAILABLE:**  
 HUNDREDS OF LOTS OF TOOLING, WELDING, INSPECTION, METROLOGY, RIGGING, POWER & HAND TOOLS & SHOP SUPPORT ASSETS. SEE END OF BROCHURE FOR MORE!



BROWN & SHARPE SIRIO M00-901-322-000 HORIZONTAL CMM

To discuss your requirements for an auction, please call Perfection Industrial +1-847-545-6374



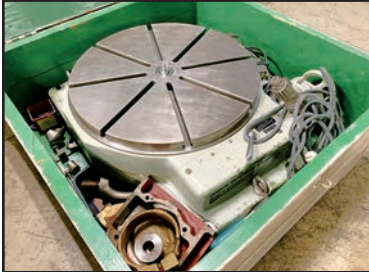
# ALSO AVAILABLE



**ALSO AVAILABLE**  
PARTS WASHERS, H-FRAME SHOP PRESSES, DRILL PRESSES, BENCH GRINDERS, PEDESTAL GRINDERS, CARBIDE GRINDERS, BELT SANDERS, BENCH VISES, MACHINE VISES, ROTARY TABLES, OVER (1,000) CAT 50 TOOL HOLDERS, TOOLING RACKS, COLLETS, BORING, DRILLS, END MILLS, CARBIDE INSERTS, TURNING TOOLS, ROTARY TABLES, T-SLOTTED TABLES, MACHINE VISES, BENCH VISES, ABRASIVES, WELDING TABLES, ELECTRODES, WELDING GUNS, HELMETS, NYLON STRAPS, LIFTING CHAINS, RIGGING RACKS, EYE-BOLTS, EYE-HOOKS, HOIST RINGS, SHACKLES, HOOKS, MAGNETS, SPREADER BARS, OD MICROMETERS, DEPTH GAUGES, HEIGHT GAUGES, DIGITAL CALIPERS, VERNIER CALIPERS, MAGNETIC BLOCKS, GROOVE GAUGES, DIGITAL INDICATORS, INDICATOR STANDS, GRANITE SURFACE PLATES, SNAP GAUGES, RING GAUGES, NO-GO GAUGES, OPTICAL MICROMETER, PH CONDUCTIVITY METERS, WIRELESS AMPLIFIER, MULTIPARAMETER METERS, PRESSURE TEST SETS, STRAIN INDICATORS, PORTABLE HARDNESS TESTER, MICROSCOPES, SCALES, SCLEROSCOPIES, LABORATORY OVENS, COMBUSTION ANALYZER, DEW POINT ANALYZERS, PORTABLE GAS ANALYZERS, GLASSWARE, HAND TOOLS, POWER TOOLS, PNEUMATIC TOOLS, PALLET RACKING, SHOP RACKS, SHOP CABINETS, SHOP CARTS, LIFT CARTS, LIFTING WORK BENCHES, STEEL TABLES, MACHINE BASE TABLES, PEDESTAL FANS, SELF-DUMPING HOPPERS, MODULAR OFFICES AND SO MUCH MORE!



**Sale Closing From:**  
Tuesday–Thursday,  
April 16–18, and  
Tuesday, April 23, From  
10:00 AM CT Each Day



View our current  
auction schedule at  
[www.perfectionindustrial.com](http://www.perfectionindustrial.com)  
To discuss your  
requirements for  
an auction, please call  
Perfection Industrial  
+1-847-545-6374



ALSO AVAILABLE CONTINUED...



Assets Available Due to the Facility Closure of  
**CATERPILLAR**<sup>®</sup>  
**JOLIET, ILLINOIS**  
[www.perfectionindustrial.com](http://www.perfectionindustrial.com)

# 4-DAY ONLINE AUCTION

To discuss your requirements for an auction, please call Perfection Industrial +1-847-545-6374

### TERMS OF SALE

An 18% buyer's premium will be charged on all assets. The buyer's premium will be reduced to 16% for payments made by means of cashier's check or wire transfer within 48 hours of sale close. If paying by company check, a paid in full invoice will be issued upon the check clearing. Credit card payments are limited to a maximum of \$2,000. All items are sold "As is, Where is" without any warranty, express or implied.

### PAYMENT

ALL PURCHASES MUST BE PAID WITHIN 48 HOURS OF THE CLOSE OF SALE. If you intend to pay by wire transfer, we will accept payment the day after the sale ONLY IF a deposit of 25% of the total purchases is made on the day of the sale. Contact our office for wire instructions. Only cash, wire transfer or certified check, payable to Perfection Industrial Sales will be accepted. Company checks payable to Perfection Industrial Sales will be accepted only if accompanied by a bank letter of guarantee. All sales are subject to sales tax. Purchasers claiming exemptions from taxes must provide proof satisfactory to the Auctioneer of their entitlement to claim such exemptions. Auction Conducted in U.S. Funds.

### REMOVAL

All assets must be removed no later than Friday, May 10. Removal times are Monday through Friday from 8:00 AM to 4:00 PM CT. Extended hours and weekends may be accommodated with prior appointment.

### FOR FURTHER INFORMATION

For further information, contact Jennifer Reiner at 1-847-545-6374 or [jennifer@perfectionindustrial.com](mailto:jennifer@perfectionindustrial.com)

**Sale Closing From:** Tuesday–Thursday, April 16–18, and Tuesday, April 23, From 10:00 AM CT Each Day  
**Inspection:** Monday, April 15, 8:00 AM to 4:00 PM CT or by Special Appointment  
**Location:** 2200 Channahon Road, Rockdale, Illinois 60436



Perfection Industrial Sales  
 ph +1-847-545-6374  
 fax +1-847-427-8884  
[www.perfectionindustrial.com](http://www.perfectionindustrial.com)

Online Bidding at  
[www.perfectionindustrial.com](http://www.perfectionindustrial.com)

Perfection Industrial Sales, IL Auction Licenses #444.000438 & #441.001779